

# Network Rail - Track and Signal Engineers

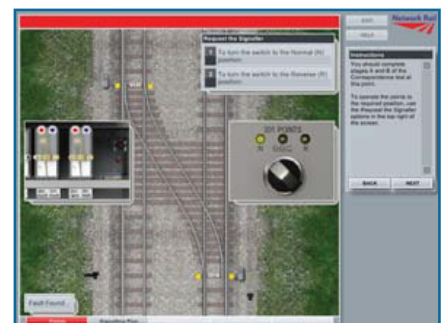
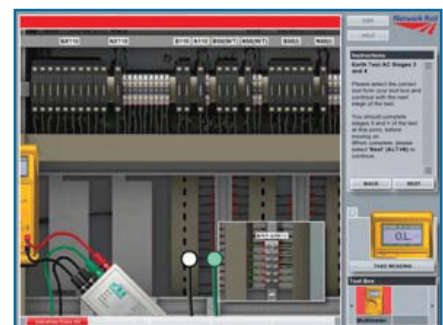
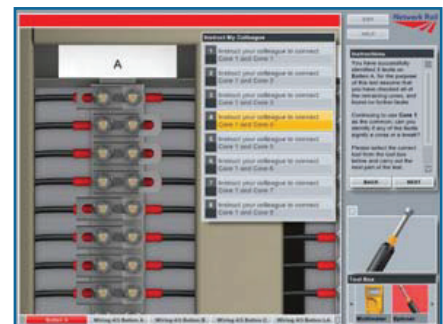
Network Rail are legally obliged to carry out regular competency tests on their 3000 track and signal engineers. This procedure is a hands on assessment. With only 13 sites throughout the UK to carry out these tests and only a small number of the engineers allowed attending each day, this proves both time consuming and logistically difficult.

Pennant was selected to develop an on-line training and assessment course to allow engineers to complete refresher training and carry out competency assessment.

Working closely with Network Rail trainers, Pennant was able to build and mimic both mechanical and electrical systems, allowing a variety of interactive training modules and authentic assessment scenarios to be constructed.

We created all of the training assets as 3D models to emulate the equipment; the training was developed using Pennant MOSAIC our on-line development and management tool, variable feedback and reactions were applied to the images.

MOSAIC provides an audit log giving evidence training has been undertaken whilst recording competence. This increased visibility coupled with the success of the course and measurable cost savings in expenses and travel time achieved by Network Rail, means other similar courses are planned.



For further information contact our sales team:  
Email: [manchester@pennantplc.co.uk](mailto:manchester@pennantplc.co.uk) Tel: +44 (0)161 947 6940